

END-OF-YEAR *REPORT*



SCHOOL ENGAGEMENT

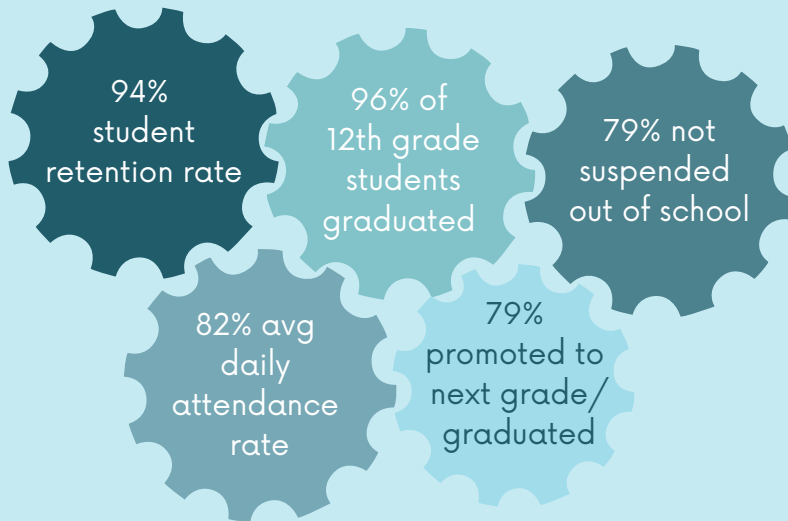
FISCAL YEAR 2025

(7/1/2024 - 6/30/2025)

Long-Term Impact

83% of 2024 graduates are on a path to self-sufficiency 12 months later.¹

Indicators of Success



How Are We Doing?²

89% of STUDENTS
93% of FAMILIES

feel the help their advocate provides is *very/extremely* helpful.

84% of STUDENTS
92% of FAMILIES

feel their advocate *always* treats them with respect.

Net Promoter Score: Students 66 (excellent), Families 86 (world class)



The Domus Relational Model

The entirety of our work is based on the undeniable power of love to transform lives. Our staff work relentlessly to engage young people, never giving up until they feel a sense of safety and belonging. We use a unique, powerful combination of trauma-responsive and anti-racist practices, positive youth development principles, loving relationships, and skill building rooted in Thoughts, Emotions, & Behaviors, a form of Cognitive Behavioral Therapy. Together, these elements engage a young person's entire nervous system to increase their safety, health, wisdom, resilience, and skills. Fundamentally, they help youth regulate, relate, and reason as they practice shifting from a chronic stress response (*fight, flight, or flee*) to engage their *calm and connect* systems. Thus, when facing life's inevitable challenges, youth can interrupt unproductive, automatic reactions and respond more capably. Through these loving, evidence-based interventions, Domus empowers young people to achieve life-changing outcomes.

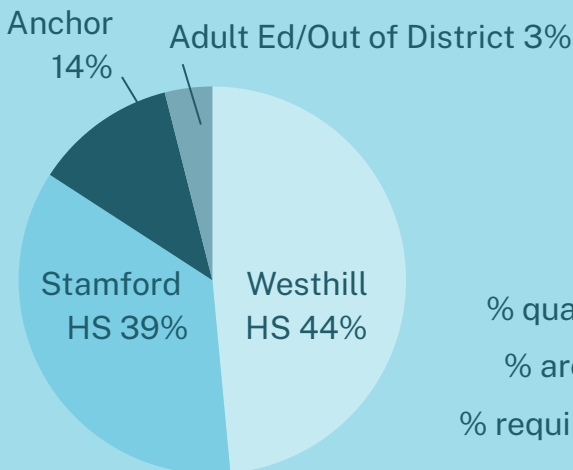
This year, Domus engaged 719 disengaged young people, each with an average of 3 traumatic experiences that have impacted their ability to succeed. Our evidence-supported interventions, in combination with the elements of our Relational Model, provided the support needed to help them re-engage and thrive.



I have an amazing advocate who's never let me down. I feel she's actually done more than her job... makes my son comfortable.

—School Engagement Parent

Our Students



	Sch Eng	SPS ⁴
Black students	39%	13%
Hispanic students	47%	54%
White students	4%	24%
Multiracial/other students	10%	9%
% qualify for free or reduced lunch	94%	54%
% are English Language Learners	13%	19%
% require special education services	31%	18%

345 Students Served

Essential Supports for Success

Building Relationships through the Relational Model by:

- Meeting weekly with students for at least 30 minutes, for **16,320 meaningful interactions** (94% in person)
- Connecting monthly with family members, for **3,089 family contacts** (38% in person)
- Engaging in **7,196 teacher connections**, including participation in PPTs

Supporting Improved Attendance and Behavior through:

- Incentives to spur improved and excellent attendance
- Wake-up calls and transportation to school
- Assistance with school-led restorative justice practices
- Partnerships with School-Based Health Centers, the Vaping Diversionary Program, and the Juvenile Review Board to ensure students' physical, mental, and academic needs are met

Supporting Families Financially with:

- Back-to-school clothing and supplies, sports equipment, and coats and hats
- Monthly assistance with food, rent, and utilities as needed
- Transition to post-secondary education or training costs
- Holiday food, gifts, and gift cards
- Enrollment fees for community programs



This program is good at helping students with school, financially, work, family, etc. They're also good at making students feel safe, comfortable, understood, and heard.

—School Engagement Student

About the Program

Domus' School Engagement Program engages disengaged high school youth over four years in intensive, interpersonal relationships to help them acquire the social and emotional skills, attitudes, and habits needed to graduate high school and enroll and engage in their post-secondary environment. The program — its 18 staff members and monies for essential student and family supports — is fully funded by private donations.

All students were disengaged at intake: They had an attendance rate between 50-85% and/or were suspended 1 or more times and/or had externalizing or internalizing behaviors impacting their ability to succeed in school.

Program Successes

Our focus in school engagement this year was on expanding opportunities for our young people through service learning, key partnerships, and post-secondary preparation and acceptance. Young people participated in the East Side Community Clean-Up, created care packets for the women's shelter in Stamford, and participated in two Special Olympics events. An example of our collaborations was our partnership with Family Centers to connect our students with internship opportunities, which four students completed. Many additional students expressed interest in that opportunity and received support with resume building and job applications. Because of our advocates' push to help all our seniors graduate and enroll in post-secondary opportunities, over 90% of our seniors graduated. Most of these students have a plan for September to continue their education; they will begin studies at the following institutions/certificate programs:

Fairfield University	Universal Tech. Institute (NJ)	JUCIO New Jersey	UConn Stamford
Western CT State University	Manhattanville University	JUCIO Maryland	The Army
Southern CT State University	Eversource training program	Norwalk Cmty College	
Central CT State University	DomusWorks	Rockland Cmty College	

Organization-Wide Successes

YOUTH & FAMILY WELL-BEING: We awarded 120 youth wellness scholarships of \$100 each. Young people applied to purchase items or services to improve their physical or mental well-being. We also provided *Spring into Summer* gifts of fun, activity-based supplies to 250 families.

SERVICE LEARNING: 75 Domus youth from across our programs planned and executed a community-wide spring/Easter celebration for over 100 local children. The celebration included pictures with the Easter Bunny, numerous egg hunts, and arts & crafts activities. Families received food to help defray the cost of feeding their children during spring break.

ADVOCACY FOR DISCONNECTED YOUTH: Domus youth and staff educated decisionmakers about challenges facing disengaged and disconnected young people.

- Youth and staff testified in Hartford on several pieces of legislation.
- Domus joined with six other nonprofits across the state to form the 119K To Zero advocacy collaborative to support efforts reducing the number of disconnected youth in the state.
- Staff and youth met with the governor, the House minority leader, and many state representatives to share their experiences.

Endnotes

¹Being on a path to self-sufficiency means program participants who were 2024 high school graduates are enrolled and engaged in post-secondary or employed.

²Survey response rates: 92% students, 90% families; Net Promoter Score is a globally used customer loyalty survey of one question asking if someone will recommend a program or service to friends and family. Scores range between -100 and 100; scores above 0 are considered *good*, with 50 and above classified as *excellent* and 80 or higher as *world class*.

⁴All Stamford Public Schools data from [State of CT DOE website](#).

